

Trail-Sport TRAVEL TRAILERS & EXPANDABLES BY: R-VISION

# Trail-Sport



TRAVEL TRAILERS & EXPANDABLES



# Benefits

## Aluminum Framed, Laminated Construction

- Superior strength, light-weight, exceptional durability

## Low Center of Gravity

- Safe, stable towing with today's downsized tow vehicles

## Fiberglass Exterior Skin

- Easy to maintain, resistant to scratches, dents and dings

## Aerodynamic Front Profile

- Less wind buffeting for more stable towing

## One-Piece Steel Chassis (Clean-Bond)

- Not bolted together-welded for extra strength

## Roto-Cast Holding Tanks

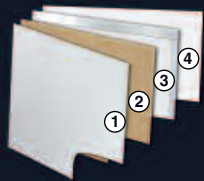
- Seamless and light-weight

## Rubber Roof

- More durable, lighter, quieter

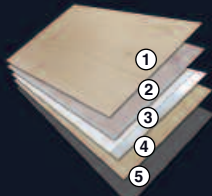
## Automotive D-Seal

- Easy to clean, better seal-used on all windows, reduces sidewall streaking



### Sidewall Laminate

1. Fiberglass Skin - dent resistant, low maintenance
2. Luan
3. Aluminum Frame and Foam
4. Wallboard



### Floor Laminate

1. Luan
2. Luan
3. Aluminum Frame and Foam
4. Luan
5. Darco



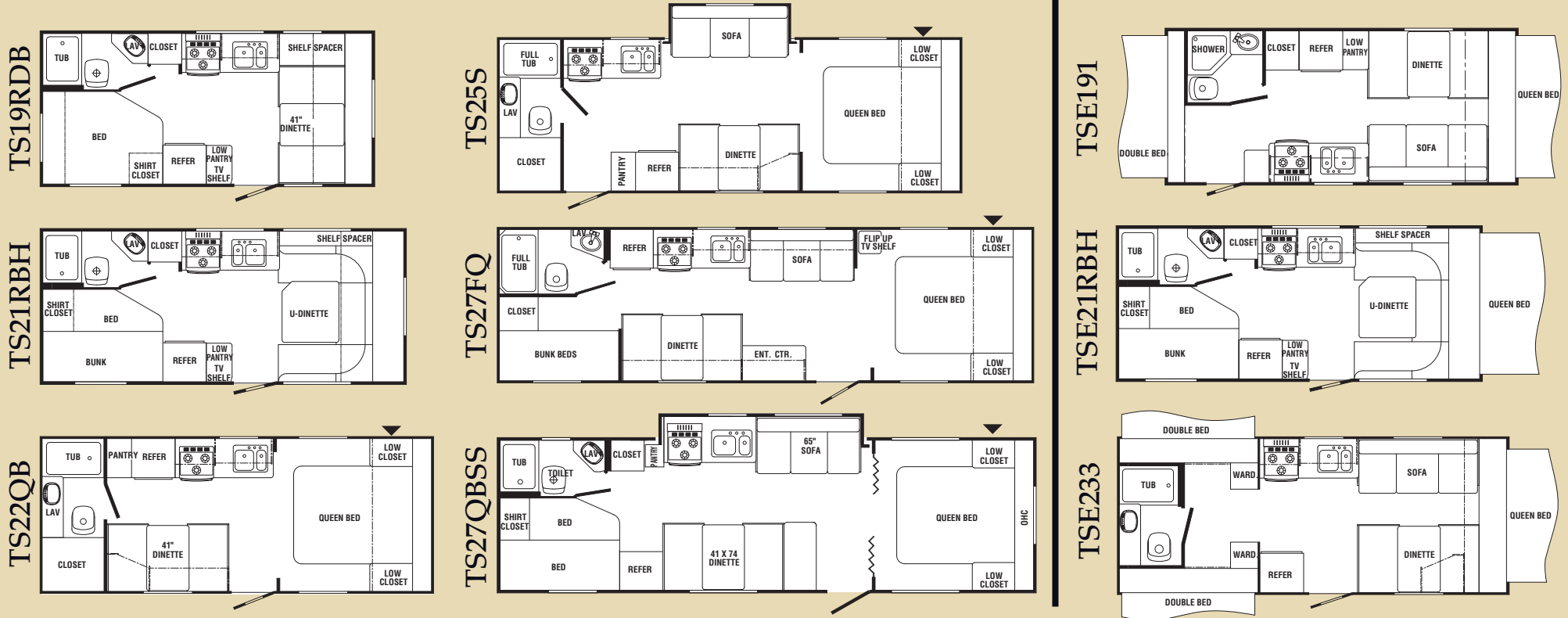
### Roof Laminate

1. Rubber Roof
2. Luan
3. Aluminum Frame and Foam
4. Ceiling Board



# Floor Plans & Specifications

# Expandables



	TS19RDB	TS21RBH	TS22QB	TS25S	TS27FQ	TS27QBSS	TSE191	TSE21RBH	TSE233
<b>Length</b>	21'2"	22'5"	23'11"	27'10"	31'7"	31'8"	21'10"	22'5"	23'9"
<b>Width (w/o Awning)</b>	96"	96"	96"	96"	96"	96"	96"	96"	96"
<b>Height (w/AC)</b>	9'9"	9'9"	9'9"	9'9"	9'9"	9'9"	9'9"	9'9"	9'9"
<b>Load Cap.</b>	3088	3048	2638	2332	2220	1792	2932	3028	2662
<b>*Hitch Dry Wt. (Appr.)</b>	277	351	219	280	326	393	324	393	460
<b>*Axle Dry Wt. (Appr.)</b>	2512	2552	2962	3268	3380	3808	2668	2572	2938
<b>*Total Dry Wt.</b>	2789	2903	3181	3548	3706	4201	2992	2965	3398
<b>GVWR</b>	5877	5951	5819	5880	5926	5993	5924	5993	6060
<b>Fresh Water Tank Cap.</b>	30	30	30	30	30	30	30	30	30
<b>Grey Water Cap.</b>	30	30	30	30	30	30	30	30	30
<b>Black Water Cap.</b>	30	30	30	30	30	30	30	30	30
<b>Tire Size</b>	ST205/75R14C	ST205/75R14C	ST205/75R14C	ST205/75R14C	ST205/75R14C	ST205/75R14C	ST205/75R14C	ST205/75R14C	ST205/75R14C

▼ Pass-Thru Storage \* Weights are approximate and based on standard features, optional equipment not included.

# Standards, Options & Towing Guide

## Appliances/Equipment

- Dometic Refrigerator, Flush Mount
- 3 Burner Range Top
- Power Range Hood w/Light
- Six Gallon Gas Water Heater
- 20,000 BTU Furnace
- Demand Water Pump
- Laminated Countertops
- Double Bowl Kitchen Sink
- Copper LP Gas Lines - Double Flared
- Color Coded Water Lines
- Water Heater Bypass Kit

## Bath

- ABS Tub or Shower Pan
- Shower Curtain w/Tieback
- Thetford Toilet
- Power Roof Vent
- Adjustable Shower Head
- Sink and Faucet
- Medicine Cabinet w/Mirror

## Construction

- Welded, Aluminum Framed, Laminated Roof with 1-1/2" Polystyrene Block Foam Insulation (R-7), Rubber Roof
- Welded, Aluminum Framed, Laminated Walls with Polystyrene Block Foam Insulation, Fiberglass Exterior Covering

- Welded, Aluminum Framed, Laminated Floor with 1-1/2" Polystyrene Block Foam Insulation (R-7)
- Butyl Tape on Exterior Seams
- Framed, Braced and Wired for Air Conditioning
- Rotocast Holding Tanks
- Rotocast Fresh Water Tank

## Electrical

- Patio Light w/ Amber Lens
- Ceiling Lights
- 120 Volt GFI Protected Circuit(s)
- 120 Volt Breaker Panel
- Outside 120 Volt Receptacle
- 30 Amp, 28' Power Cord
- 55 Amp Converter w/Charger
- Battery Rack
- Pre-Wired for Microwave

## Exterior

- Rubber Roof
- Fiberglass Skin
- Clean Bond Painted Chassis
- Radius Windows
- Radius Entry Door w/Window, Deadbolt Lock and Screen Door
- Outside Storage Compartment
- Self-Storing Step
- 20# LP Tanks

- 2-5/16" Coupler
- Radius Baggage Door

## Interior

- Galley Window
- Vinyl Back Dinette and Bunk Cushions
- Valances
- Mini Blinds
- No-Wax Vinyl Flooring
- Roof Vent in Living Area (Deleted w/Optional Air Conditioning Some Models)
- Power Roof Vent in Bath
- Inside - Outside Table (TS19RDB, TS21RBH, TSE21RBH)

## Bed Ends

- Weathershield Tent (Attached Inside C-channel to Prevent Water Entry)
- Continuous Piano Hinge for Added Strength
- Key Locked for Security
- Compression Clamps Ensure Tight Bond of Bunk Seals
- 6" Bunk End Cushions for Comfort
- Pre-wired for Bunk Lights

## Running Gear

- 14" Trailer Tires
- White Spoked Wheels
- Tandem Axles
- 10" Electric Brakes, All Wheels
- Galvanized Wheel Wells
- E-Z Lube Hubs

## Safety

- Break-A-Way Switch
- Fire Extinguisher
- Smoke Detector
- LP Detector
- Safety Chains
- Ground Fault Protected Circuit(s)
- Dead Bolt Door Lock

## General Warranty Information

- Rubber Roof . . . . . 12 Yrs.
- Fiberglass Skin . . . . . 2 Yrs.
- Painted Chassis . . . . . 1 Yr.
- Structure . . . . . 2 Yrs.
- Suspension System . . . . . 1 Yr.
- General Camper Coverage . 1 Yr.
- Norco Slideout Mechanism . 2 Yrs.
- Atwood Appliances . . . . . 2 Yrs.
- Dometic Appliances . . . . . 3 Yrs.
- Weathershield Tent . . . . . 5 Yrs.

## Approx. Wt. (lbs.)

### Options

Air Conditioning, 13,000 BTU . . . . .	104
15,000 BTU . . . . .	110
Awning, A & E . . . . .	40-60
Spare Tire, Wheel & Carrier . . . . .	35
Stabilizer Jacks (4) (STD in XP) . . . . .	24
TV Antenna/Cable . . . . .	6
Outside Grill . . . . .	15
AM/FM CD Player . . . . .	4
Microwave . . . . .	30
Oven . . . . .	30
Roof Ladder . . . . .	5
Outside Sliding Storage Drawer . . . . .	36
Outside Shower . . . . .	3
D.S.I. Water Heater . . . . .	1
2 Door Refrigerator . . . . .	17
Sink Cover . . . . .	1
Stove Cover . . . . .	1
Monitor Panel . . . . .	1
Tub Surround . . . . .	10
Fan-Tastic Fan . . . . .	15
2 Bar Stools . . . . .	20
Double Step Entry . . . . .	7

VEHICLE	ENGINE	TOW LIMIT										
<b>Acura</b>			Caravan	3.8 V-6	3500	Santa Fe (4WD)	2.7 V-6	2700	ML 350	3.7 V-6	5000	
MDX	3.5 V-6	4500	Dakota (2WD) Reg. Cab.	3.7 V-6	4900	<b>Isuzu</b>			ML 500	5.0 V-8	5000	
RL 3.5 V-6	2000		Dakota (2WD) Reg. Cab.	3.7 V-6	5300	Rodeo/Rodeo Sport	2.2, 2.6 I-4	2500	ML5AMG	5.4 V-8	7000	
<b>AM General</b>			Dakota (2WD) Reg. Cab.	4.7 V-8	5600	Rodeo	3.2 V-6	4500	<b>Mercury</b>			
Hummer H2	6.0 V-8	6700	Dakota (2WD) Club Cab.	4.7 V-8	6450	Ascender (4WD)	4.2 I-6	5300	Mountaineer	4.0 V-6	5460	
<b>Buick</b>			Dakota (4WD) Reg. Cab.	3.7 V-6	3850	Axiom	3.5 V-6	7000	Mountaineer	4.6 V-8	7300	
Rendezvous	3.4 V-6	3500	Dakota (4WD) Club Cab.	4.7 V-8	6300	<b>Jeep</b>			Villager	3.3 V-6	3500	
<b>BMW</b>			Dakota (4WD) Club Cab.	3.7 V-6	4500	Grand Cherokee	4.0 I-6	5000	<b>Mitsubishi</b>			
X5 4.6 V-8	5950		Dakota (4WD) Club Cab.	4.7 V-8	5100	Grand Cherokee	4.7 V-8	6500	Montero Limited, XLS	3.5 V-6	5000	
X5 4.4 V-8	5950		Durango (4WD)	4.7 V-8	5700	Liberty	2.4 I-4	2000	Montero Sport ES, LS	3.0 V-6	5000	
<b>Cadillac</b>			Durango (4WD)	5.9 V-8	7300	Liberty	3.7 V-6	5000	Endeavor	3.8 V-6	3500	
Escalade AWD	6.0 V-8	8200	Ram (2WD) 1500 All Cab.	4.7 V-8	5750	Wrangler	4.0 I-6	2000	<b>Nissan</b>			
SRX	ALL	3500	Ram (4WD) 1500 All Cab.	5.7 V-8	7300	<b>Kia</b>			Pathfinder	3.5 V-6	5000	
<b>Chevrolet/GMC</b>			Ram Quad B1500	4.7 V-8	5400	Sedona	3.5 V-6	3500	Frontier (4WD)	3.3 V-6	5000	
Astro/Safari (AWD)	4.3 V-6	5000	Ram Quad B2500	5.7 V-8	8300	Sorento	3.5 V-6	3500	Xterra	3.3 V-6	5000	
Astro/Safari (RWD)	4.3 V-6	5200	<b>Ford</b>			<b>Land Rover</b>			Quest	3.5 V-6	3500	
Blazer/Jimmy (4WD)	4.3 V-6	5500	Econoline Van	4.6 V-8	6500	Discovery	All	5500	<b>Oldsmobile</b>			
Colorado	3.5 I-5	4000	Econoline Van	5.4 V-8	6900	Range Rover	All	7700	Bravada	4.2 I-6	6300	
Express/Savana/G1500	5.3 V-8	6200	Expedition (4WD)	4.6 V-8	5000	<b>Lexus</b>			Silhouette	3.4 V-6	3500	
Express/Savana/G1500	5.3 V-8	6600	Expedition (2WD)	4.6 V-8	5000	RX300	3.3 V-6	3500	<b>Pontiac</b>			
Express/Savana/G2500	6.0 V-8	8400	Expedition (4WD)	5.4 V-8	6000	Explorer (2WD)	4.0 V-6	5780	Aztec	3.4 V-6	3500	
Express/Savana/G2500/3500	6.0 V-8	8300	Explorer (4WD)	4.0 V-6	5380	Explorer (4WD)	4.0 V-6	5380	Montana	3.4 V-6	3500	
K1500 Ext. Cab. (4WD)	4.8 V-6	6600	F-150 Reg. Cab. (2WD)	4.2 V-6	3500	F-150 Reg. Cab. (2WD)	4.6 V-8	5800	<b>Subaru</b>			
S Series/Sonoma	4.3 V-6	5200	F-150 Reg. Cab. (2WD)	4.6 V-8	5800	<b>Infiniti</b>			Legacy/Outback/Forester	2.5 SOHC I-4	2000	
Silverado/Sierra/C/K 1500	4.3 V-6	4800	FX 35/45	ALL	3500	<b>Honda</b>			<b>Toyota</b>			
<b>Chrysler</b>			<b>Honda</b>			Pilot	3.5 V-6	3500	4 Runner	3.4 V-6	5000	
Town & Country	3.3, 3.8 V-6	3800	Pilot	3.5 V-6	3500	Odyssey	3.5 V-6	3500	Land Cruiser	4.7 V-8	6500	
<b>Dodge</b>			<b>Hyundai</b>			<b>Mazda</b>			Sienna	3.3 V-6	3500	
Caravan	3.3, 3.8 V-6	3800	Santa Fe (2WD)	2.7 V-6	3200	B3000 (4WD)	3.0 V-6	2560	Tacoma	3.4 V-6	5000	
						B4000	4.0 V-6	5760	Tundra (4WD)	4.7 V-8	7200	
						B4000 (4WD)	4.0 V-6	5580				
						Tribute	3.0 V-6	3500				
						<b>Mercedes-Benz</b>						
						G-500	5.0 V-8	7000				

Listed above are tow ratings that are the highest available for the respective 2004 models. Certain optional equipment may be required and other restrictions may apply. Check with your automotive dealer for exact specifications.



Our 58 acre complex in Warsaw, Indiana.

**R-Vision, Inc.**  
2666 S. Country Club Drive  
Warsaw, IN 46580  
[www.trail-lite.com](http://www.trail-lite.com)

Your Dealer

As R-Vision constantly strives to improve our product, all specifications listed in this informative brochure are subject to change without notice or obligation. Photos may show optional equipment which is not included in the purchase price of the unit. Test drive and review a current model on your dealer's lot today.