

# Trail-Lite

by R-VISION



*Your adventure begins here.*



*Model 8263 shown with Bluberry interior.*



*Model 8263 shown with Bluberry interior.*

## Trail-Lite Benefits

### Super Light Weight

- Safe, easy, fuel efficient towing

### Enclosed Undercarriage

- Improves fuel efficiency significantly, improves appearance, allows for much more interior storage space, better insulation and heated holding tanks. Corrosion free underbelly for effortless towing, low maintenance.

### Laminated Aluminum Framed Construction

- Superior strength, light weight and exceptional durability

### Aerodynamic Molded Front LP Bottle Cover

- Protects LP bottles and battery.

### Lower Center of Gravity

- Stable, safe towing with today's down sized tow vehicles.

### Works in the Basement

- Water tank, holding tanks, and heat ducts located under floor in the "Basement" providing for warm floors, more inside storage space, and low center of gravity.

### Independent Torsion Suspension System with Radial Tires

- Unsurpassed towing stability with EZ-Lub™ hubs

### One-Piece Steel Chassis (Clean-Bond)

- Not bolted together, welded for extra strength

### Bed Storage

- Storage tubs under queen beds with access doors
- Tackle box under bed storage with 2 large tubs

### 6'6" Interior Height

- Spacious feeling



### Apron Front Sink

Larger sink with optional cover provides greater workspace.



### Bed Storage

Engineered for easy accessibility while maximizing your storage area.



### Neo-Angle Glass Shower

(Some Models)



### Banak

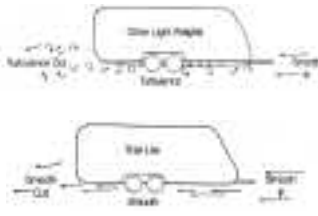
Hardwood, light-weight, 99% knot free; 1/3 the weight of pine. Used in framing cabinets for the Trail-Lite.



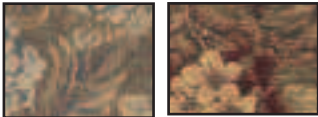
### Pine

Used in framing cabinets by other RV manufacturers.

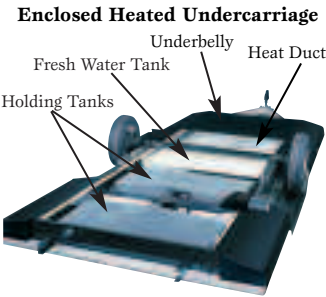
# Floor Plans



Trail-Lite uses modern race car technology to bring you towing ease and stability. Trail-Lite's enclosed chassis is clear of the exposed holding tanks, crossmembers and outriggers that create turbulence when the trailer is towed. Airflow is smooth and drag is greatly reduced. Towing a Trail-Lite is a breeze!



Blueberry Cranberry

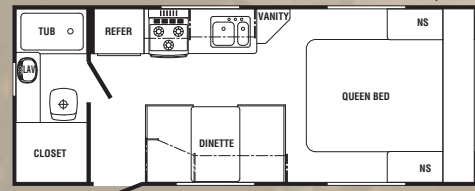


Enclosed Heated Undercarriage

Fresh Water Tank Underbelly Heat Duct Holding Tanks



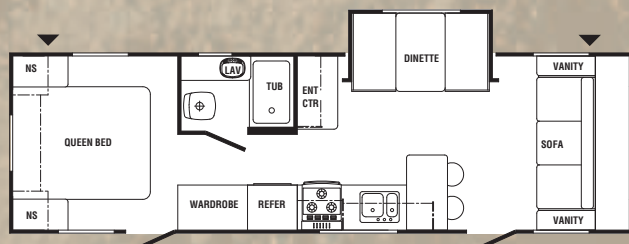
**Liftco Slide-Out**  
High quality slide-out. Welded steel framework strengthens slide-out openings.



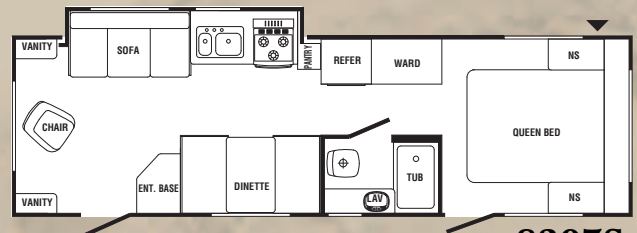
8230



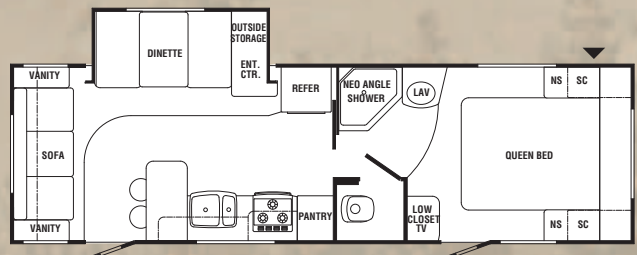
8263S



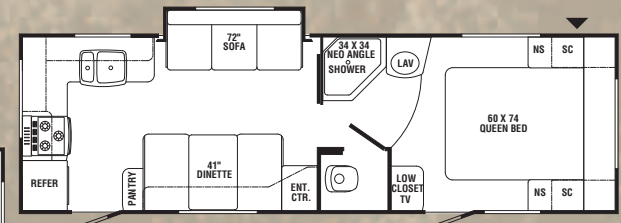
8306S



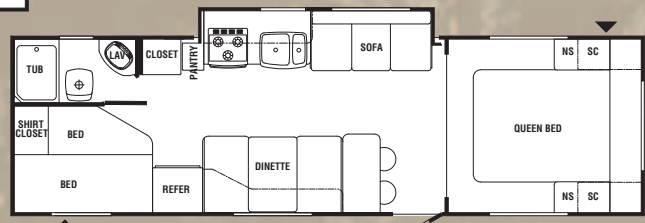
8307S



8308S



8309S

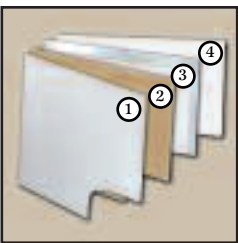


8310S

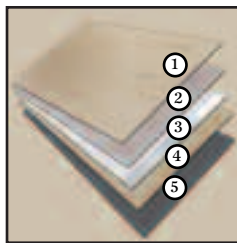
▲ Utility Storage Door  
▼ Pass-Thru Storage

	8230	8263S	8306S	8307S	8308S	8309S	8310S
<b>Length</b>	24'1"	27'1"	31'2"	31'4"	30'9"	30'2"	31'6"
<b>Width (w/o Awning)</b>	96"	96"	96"	96"	96"	96"	96"
<b>Height (w/AC)</b>	9'10"	9'10"	9'10"	9'10"	9'10"	9'10"	9'10"
<b>Awning Length</b>	15'	18'	20'	20'	20'	20'	20'
<b>*Hitch Dry Wt. (Appr.)</b>	311	350	604	330	424	417	598
<b>*Axle Dry Wt. (Appr.)</b>	3160	3972	4400	4446	4738	4334	4162
<b>GVWR</b>	7311	7350	7604	7330	7424	7417	7598
<b>Total Dry Wt.</b>	3471	4322	5004	4776	5162	4751	4760
<b>Load Cap.</b>	3840	3028	2600	2554	2262	2666	2838
<b>Tire Size</b>	205/75 14C	205/75 14C	205/75 14C	205/75 14C	205/75 14C	205/75 14C	205/75 14C
<b>Fresh Water Tank Cap.</b>	40	40	40	40	40	40	40
<b>Grey Water Cap.</b>	40	40	40	40	40	40	40
<b>Black Water Cap.</b>	40	40	40	40	40	40	40

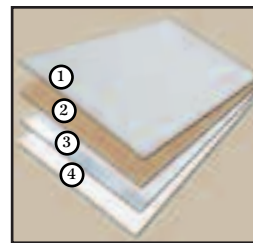
\*Weights are approximate and based on standard features, optional equipment not included.



**Sidewall • 2" Thick Laminate R-7**  
1. Fiberglass Skin - dent resistant, low maintenance  
2. Luan  
3. Aluminum Frame and Foam  
4. Wallboard



**Floor • 2" Thick Laminate R-7**  
1. Luan  
2. Luan  
3. Aluminum Frame and Foam  
4. Luan  
5. Darco



**Roof • 3" Laminate R-13**  
1. Rubber Roof  
2. Luan  
3. Aluminum Frame and Foam  
4. Ceiling Board

# Specifications



## Appliances/Equipment

- Dometic Flush Mount Refrig.
- 3 Burner Range Top
- Power Range Hood w/Light
- Six Gallon DSI Water Heater
- Furnace 30,000 BTU (20,000 BTU on Model 8230)
- Air Conditioner Ready
- Water Heater Bypass Kit
- Demand Water Pump
- Laminated Galley Top w/Double Stainless Sink and Euro Style Faucet
- Copper LP Gas Lines
- P.E.X. Water Lines
- Monitor Panel

## Bath

- Fiberglass Reinforced Tub
- Shower Curtain w/Valance
- Thetford Toilet
- Medicine Cabinet w/Mirror
- Towel Bar, Toothbrush Holder and Tissue Holder
- Power Roof Vent
- Light w/Wall Switch
- Large Bath Sink
- Full Tub

## Electrical

- Patio Light w/Amber Lens
- Ceiling Lights w/Wall Switches
- 120 Volt GFI Protected Circuits
- 120 Volt Fuse Panel
- Outside 120 Volt Recept
- 30 Amp, 28' Power Cord (Detachable)
- 55 Amp, Whisper Quiet Converter w/Charger
- Battery Box w/Positive Ventilation
- Pre-Wired for Air Conditioner
- Pre-Wired for Microwave

## Exterior

- Rubber Roof
- Tinted Jalousie Windows
- Aerodynamic Front Profile
- Flush Mount Front Window/Awning
- 26" Entry Door(s) w/Radius Corners, Window, Screen Door, and Flush Mount Latch
- Locking Baggage Doors
- Self-Storing Step(s) (Powder Coated)
- Large Front Storage Compartment
- Enclosed 30# LP Tanks
- 2-5/16" Coupler
- Break-away Switch
- Enclosed, Heated Underbelly
- Sewer Hose Compartment
- Easy Access Dump Valves

## Interior

- Panoramic Galley Window
- Reversible Dinette Cushions
- Mini Blind at Galley
- No-wax Vinyl Flooring
- "Euro Look" Overhead Cabinets w/Under Cabinet Shelves
- Mortise and Tenon Cabinet Doors
- Hidden Plumbing and Wiring
- High Pressure, Laminated Plywood Countertops
- Queen Bed w/Quilted Pillow Top Bedspread
- Light/Air Roof Vent(s)
- Fire Extinguisher, Smoke Detector, LP Detector
- Cabinets and Slide-Out Facia
- Large Residential Kitchen Sink
- Designer Radiused Window Treatment
- Under Bed Storage w/Struts

## Running Gear

- 14" Radial Trailer Tires
- White Spoke Wheels w/10" Electric Brakes
- Independent Torsion E-Z Lube Hubs Suspension System, Rubber Ride
- Welded I-Beam, Steel Frame

## Super Lite Weight

- Enclosed Chassis/Undercarriage
- Aerodynamic Front Profile
- Laminated Aluminum Frame Construction
- Thick Wall Construction (2")
- Fiberglass Exterior Skin
- Enclosed LP Bottle Area
- Low Center of Gravity
- I-Beam, Steel Chassis
- Tinted Jalousie Windows
- Ducted Air Conditioning (All Models)
- Shirt Closets Beside Queen Beds

## General Warranty Information\*

- |                              |          |
|------------------------------|----------|
| • Rubber Roof                | 12 Years |
| • Fiberglass Skin            | 2 Years  |
| • Clean Bond Painted Chassis | 1 Year   |
| • Structure                  | 2 Years  |
| • Dometic Appliances         | 3 Years  |
| • Atwood Appliances          | 2 Years  |
| • Liftco Slideout Mechanism  | 1 Year   |
| • Suspension System          | 5 Years  |
| • General Camper Coverage    | 1 Year   |

\*Refer to specific written warranty statement

# Towing Guide

Listed below are tow ratings that are the highest available for the respective 2004 models. Certain optional equipment may be required and other restrictions may apply. Check with your automotive dealer for exact specifications.

VEHICLE	ENGINE	TOW LIMIT									
<b>Acura</b>			Dakota (4WD) Reg. Cab.	4.7 V-8	6300	<b>Kia</b>			<b>Pontiac</b>		
MDX	3.5 V-6	3500	Dakota (4WD) Club Cab.	3.7 V-6	4500	Sedona	3.5 V-6	3500	Aztec	3.4 V-6	3500
RL	3.5 V-6	2000	Dakota (4WD) Club Cab.	4.7 V-8	5100	Sorento	3.5 V-6	3500	Montana	3.4 V-6	3500
<b>AM General</b>			Durango (4WD)	4.7 V-8	5700	<b>Land Rover</b>			<b>Subaru</b>		
Hummer H2	6.0 V-8	6700	Durango (4WD)	5.9 V-8	7300	Discovery	All	5500	Legacy/Outback/Forester	2.5 SOHC I-4	2000
<b>Buick</b>			Ram (2WD) 1500 All Cab.	4.7 V-8	5750	<b>Range Rover</b>	All	7700	<b>Toyota</b>		
Rendezvous	3.4 V-6	3500	Ram (4WD) 1500 All Cab.	5.7 V-8	7300	<b>Lexus</b>			4 Runner	3.4 V-6	5000
<b>BMW</b>			Ram Quad B1500	4.7 V-8	5400	RX300	3.3 V-6	3500	Land Cruiser	4.7 V-8	6500
X5	4.6 V-8	5950	Ram Quad B2500	3.7 V-8	8300	LX470	4.7 V-8	6500	Sienna	3.3 V-6	3500
X5	4.4 V-8	5950	<b>Ford</b>			<b>Lincoln</b>			Tacoma	3.4 V-6	5000
<b>Cadillac</b>			Econoline Van	4.6 V-8	6500	Aviator	4.6 V-8	7100	Tundra (4WD)	4.7 V-8	7200
Escalade AWD	6.0 V-8	8200	Econoline Van	5.4 V-8	6900	Navigator	5.4 V-8	8800			
SRX	ALL	3500	Expedition (4WD)	4.6 V-8	5000	<b>Mazda</b>					
<b>Chevrolet/GMC</b>			Expedition (2WD)	4.6 V-8	5000	B3000 (4WD)	3.0 V-6	2560	<b>OPTIONS</b>	<b>APPROX. WT. (LBS.)</b>	
Astro/Safari (AWD)	4.3 V-6	5000	Expedition (4WD)	5.4 V-8	6000	B4000	4.0 V-6	5760	Air Conditioning, 13,500 BTU	104	
Astro/Safari (RWD)	4.3 V-6	5200	Explorer (2WD)	4.0 V-6	5780	B4000 (4WD)	4.0 V-6	5580	Air Conditioning, 15,000 BTU	110	
Blazer/Jimmy (4WD)	4.3 V-6	5500	Explorer (4WD)	4.0 V-6	5380	Tribute	3.0 V-6	3500	AM/FM CD Player	4	
Colorado	3.5 I-5	4000	F-150 Reg. Cab. (2WD)	4.2 V-6	3500	<b>Mercedes-Benz</b>			Awning, A & E	40-60	
Express/Savana/G1500	5.3 V-8	6200	F-150 Reg. Cab. (2WD)	4.6 V-8	5800	G-500	5.0 V-8	7000	Swivel Rocker Chair	35	
Express/Savana/G1500	5.3 V-8	6600	<b>Infiniti</b>			ML 350	3.7 V-6	5000	Microwave	30	
Express/Savana/G2500	6.0 V-8	8400	FX 35/45	ALL	3500	ML 500	5.0 V-8	5000	Oven	30	
Express/Savana/G2500/3500	6.0 V-8	8300	<b>Honda</b>			ML5AMG	5.4 V-8	7000	Spare Tire & Wheel	35	
K1500 Ext. Cab. (4WD)	4.8 V-6	6600	Pilot	3.5 V-6	3500	<b>Mercury</b>			Stabilizer Jacks (Four)	24	
S Series/Sonoma	4.3 V-6	5200	Odyssey	3.5 V-6	3500	Mountaineer	4.0 V-6	5460	TV Antenna/Cable/Satellite Ready	6	
Silverado/Sierra/C/K 1500	4.3 V-6	4800	<b>Hyundai</b>			Mountaineer	4.6 V-8	7300	Roof Ladder	5	
<b>Chrysler</b>			Santa Fe (2WD)	2.7 V-6	3200	Villager	3.3 V-6	3500	Outside Grill	15	
Town & Country	3.3, 3.8 V-6	3800	Santa Fe (4WD)	2.7 V-6	2700	<b>Mitsubishi</b>			Outside Shower	3	
<b>Dodge</b>			<b>Isuzu</b>			Montero Limited, XLS	3.5 V-6	5000	Outside Sliding Drawer	36	
Caravan	3.3, 3.8 V-6	3800	Rodeo/Rodeo Sport	2.2, 2.6 I-4	2500	Montero Sport ES, LS	3.0 V-6	5000	Sink Cover	1	
Caravan	3.8 V-6	3500	Rodeo	3.2 V-6	4500	Endeavor	3.8 V-6	3500	Stove Cover	10	
Dakota (2WD) Reg. Cab.	3.7 V-6	4900	Ascender (4WD)	4.2 I-6	5300	<b>Nissan</b>			Tub Surround	7	
Dakota (2WD) Reg. Cab.	3.7 V-6	5300	Axiom	3.5 V-6	7000	Pathfinder	3.5 V-6	5000	Double Entry Step	7	
Dakota (2WD) Reg. Cab.	4.7 V-8	5600	<b>Jeep</b>			Frontier (4WD)	3.3 V-6	5000	Chrome Trim Rings w/Cap	3	
Dakota (2WD) Club Cab.	4.7 V-8	6450	Grand Cherokee	4.0 I-6	5000	Xterra	3.3 V-6	5000	Raised Panel Overhead Door	5	
Dakota (4WD) Reg. Cab.	3.7 V-6	3850	Grand Cherokee	4.7 V-8	6500	Quest	3.5 V-6	3500	Raised Panel Refer Door	3	
			Liberty	2.4 I-4	2000	<b>Oldsmobile</b>			Fan-Tastic Fan	15	
			Liberty	3.7 V-6	5000	Bravada	4.2 I-6	6300	2 Bar Stools	20	
			Wrangler	4.0 I-6	2000	Silhouette	3.4 V-6	3500			

## R-Vision, Inc.

2666 S. Country Club Drive  
Warsaw, IN 46580  
www.trail-lite.com



Our 58 acre complex in Warsaw, Indiana

As R-Vision constantly strives to improve our product, all specifications listed in this informative brochure are subject to change without notice or obligation. Photos may show optional equipment which is not included in the purchase price of the unit. Test drive and review a current model on your dealer's lot today.  
2006 R-Vision, Inc. R-80-003

Your Dealer