



Mocha Java



Sage Mist



Canyon



INTERIOR DECORS

Sage Mist

LIVING/DINING ROOM



Dinette Cushions



Sofa



Ultraleather™ Driver & Front Passenger Seats

BEDROOM



Bedspread & Headboard



Headboard & Pillow Shams

Canyon

LIVING/DINING ROOM



Dinette Cushions



Sofa

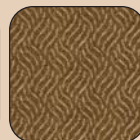


Ultraleather™ Driver & Front Passenger Seats

BEDROOM



Bedspread & Headboard



Headboard & Pillow Shams

Mocha Java

LIVING/DINING ROOM



Dinette Cushions



Sofa



Ultraleather™ Driver & Front Passenger Seats

BEDROOM



Bedspread & Headboard



Headboard & Pillow Shams

Wood Finishes



Windsor Birch



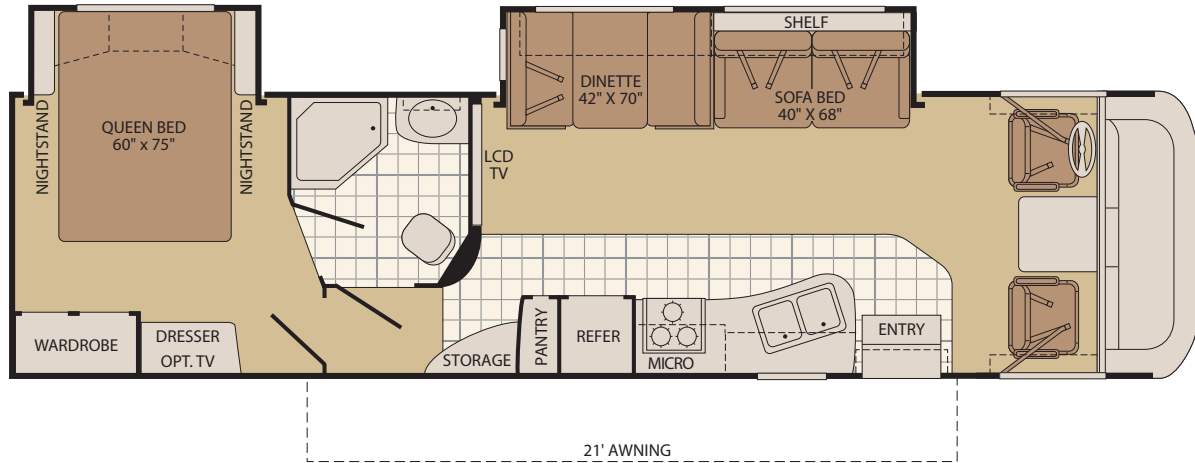
Plantation Cherry

FLOOR PLANS



33L

Double Slide-Out

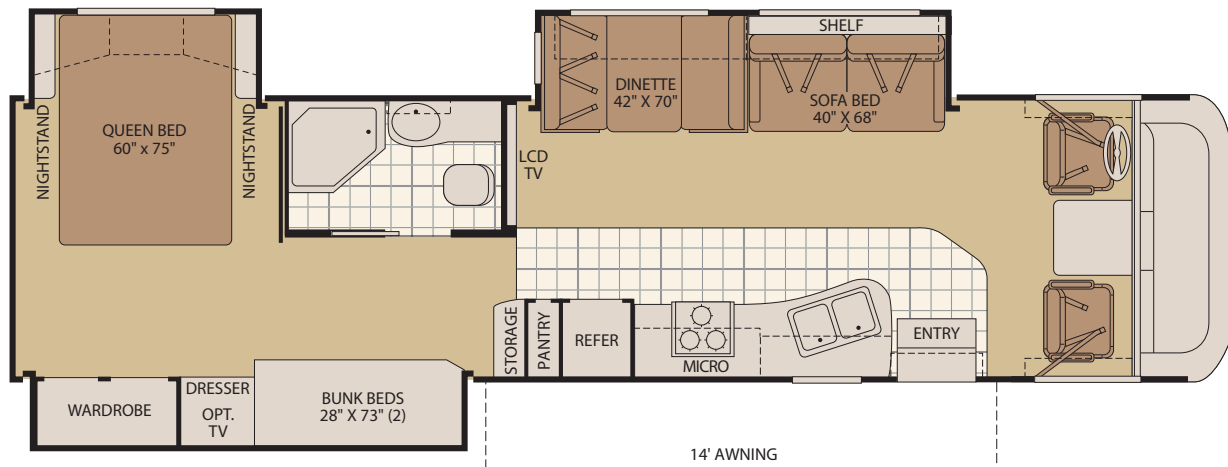


Interior Storage Capacity: 134 cu. ft.

Exterior Storage Capacity: 155 cu. ft.

34B

Triple Slide-Out



Interior Storage Capacity: 144 cu. ft.

Exterior Storage Capacity: 167 cu. ft.

STANDARD FEATURES

INTERIOR

INTERIOR THROUGHOUT

- 15,000 BTU Ducted Air Conditioner
- 3 Interior Décor
- 34,000 BTU Furnace
- 6 Gallon Quick Recovery Water Heater w/Direct Spark Ignition
- Battery Disconnect System
- Automotive A/C Heater Combo
- TuffPEX Plumbing System
- Deluxe Roller Bearing, Full Extension Drawer Guides
- Radius Edged Cabinet Doors & Drawer Fronts
- Hidden Cabinet Door Hinges
- On Demand Water Pump w/Filter
- Systems Monitor Panel
- 120V/12V AC/DC Converter
- Central Electrical Panel w/Charger
- Energy Management System
- Wall Mounted Heat Registers
- Water Heater Bypass Valve

DRIVER CONVENIENCE

- 3 Point Seat Belts at Driver & Front Passenger Seats
- AM/FM Radio w/CD & Electronic Tuning
- Auxiliary Start Circuit
- Cruise Control
- Double Swivel Sun Visors w/Map Pockets
- Driver Captain's Chair w/Reclining Back/Slide Controls
- Passenger Chair w/Reclining Back/Slide Controls/Footrest/Adjustable Armrests
- Intermittent Wiper Control
- Radio Switch Main/Auxiliary Power
- Tilt Steering Wheel
- Telephone Jack
- 12V Power Jack

LIVING ROOM

- 32" LCD HDTV Mid-Coach Location
- Video Control Box

- Flexsteel® Furniture
- Vinyl Floor Covering in Lavy/Galley/Entry

GALLEY

- 6 cu.ft. Dometic® Refrigerator
- 3 Burner Range w/Oven
- 30" Microwave
- Satin Nickel Cabinet Hardware
- Large Stainless Steel Double Sink
- High Rise Faucet
- Wood Drawer Construction

BEDROOM

- Wardrobe w/Mirrored Sliding Doors
- Innerspring Mattress
- Rear TV Receptacle
- TV Shelf w/Cable Jack (TV not included)
- Adjustable Reading Lights

BATHROOM

- Marine Toilet
- Molded ABS Tub/Shower Surround
- Power Bath Vent
- Skylight in Tub/Shower
- Glass Shower Door
- Medicine Cabinet w/Adjustable Shelves
- Vanity Lights

SAFETY/CONVENIENCE

- 10 ABC Fire Extinguisher
- Carbon Monoxide Detector/Alarm
- Propane Detector/Alarm
- Smoke Detector/Alarm
- Entry Grab Handle
- Child Safety Tether
- Multiple Seatbelt Locations

EXTERIOR

EXTERIOR THROUGHOUT

- 3 Colorway Graphics to Match Décor
- 30 Amp Service
- 4.0 kW Onan® MicroQuiet Generator
- Amber Porch Light
- Awning Rail/Drip Molding (Both Sides)

- Power/Heated Rear View Mirrors
- Full Basement Configuration
- Dometic® Patio Awning
- Radius Entry Door
- Roof Ladder
- TV Antenna w/Signal Booster
- ABS Front/Rear Wheel Well Trims
- Automatic 4 Point Electric Levelers
- Dual 6V Deep Cycle 217 Amp Auxiliary Batteries

AUTOMOTIVE

- Halogen Headlights w/Polycarbonate Lens
- Rear Fuel Fill
- Trailer Hitch w/7 Point Electrical Hook-Up†
- 5,000 lb.Towing Capacity†
- Stainless Steel Wheel Simulators

SAFETY/CONVENIENCE

- Deadbolt Latch on Entry Door
- Dual Battery Charge Control
- High Mounted Taillights
- Entry Assist Handle
- One-Piece Swing-Down Engine Access Door
- Park Cable Receptacle
- Patio Receptacle
- Automatic Power Entry Step
- Automotive Safety Glass
- Daytime Running Lights
- Hydraulic 4 Wheel Disk Brakes w/4 Wheel Anti-Lock Brakes

BODY STRUCTURE

- Aluminum Interlocking Floor/Wall/Ceiling Framing
- Vacu-bond® Floor and Ceiling
- Vacu-bond® Walls w/Smooth High Gloss Exterior Tuff-Coat® Fiberglass
- Fiberglass Front and Rear Cap
- Windshield Bonded to Fiberglass Front Cap
- One-Piece Royal Tuff-Ply Radius Roof

STORAGE

- Large, Exterior Pass-Through Storage Compartments
- Lighted Luggage Compartments
- Insulated, Side-Swing Luggage Doors
- Rotomolded Polyethylene Luggage Compartments
- Continuous One Piece Compartment Bulb Seal

OPTIONS

INTERIOR

- High Efficiency Ducted Dual Air Conditioners
- Sirius Satellite Radio® (6 Month Subscription Included)
- Day/Night Pleated Shades
- DVD Player
- Fan-Tastic® Power Roof Vent
- 8 cu.ft. Dometic® Refrigerator
- 19" LCD HDTV

EXTERIOR

- 30 Amp EMS w/5.5kW Generator/ Dual A/C
- 50 Amp EMS w/5.5kW Generator/ Dual A/C
- Exterior Wash Unit
- Spare Tire

FLEETWOOD ADVANTAGES

- Pass-Through Basement Storage with Side-Swing Door for Easy Access
- Exciting Floor Plans with Mid-Coach 32" LCD HDTV
- Ultra High Gloss Fiberglass Walls for Striking Looks
- Interlocking Floor-to-Sidewall Construction for Improved Fit, Finish and Integrity

WEIGHTS AND MEASUREMENTS

FORD® CHASSIS

MODELS	33L	34B
Engine Displacement (Liters)	6.8	6.8
Wheelbase (Inches)	208"	228"
GVWR (lbs) ¹	20,500	20,500
Front GAWR (lbs) ²	7,000	7,000
Rear GAWR (lbs) ²	13,500	13,500
Base Weight (lbs) ³	15,450	16,000
GCWR (lbs) ⁴	25,500	25,500
Hitch Rating Weight (lbs) [†]	5,000	5,000
Tongue Weight (lbs) [†]	500	500
Fuel Capacity (gal)	75	75

DIMENSIONS & CAPACITIES

MODELS	33L	34B
Overall Length ⁵	33' 7"	35' 7"
Overall Height (with A/C)	12' 0"	12' 0"
Overall Width (maximum) ^{6,7}	102"	102"
Interior Height (maximum)	79"	79"
Interior Width (maximum)	96"	96"
Fresh Water Holding Tank (gal)	50	50
Grey Water Holding Tank (gal)	40	40
Black Water Holding Tank (gal)	30	30
Appliance Propane Tank (gal) (WC) ⁸	25	25
Water Heater Tank (gal)	6	6

Liquid Weight Reference: Water (gal) = (8.3 lbs/3.8 kgs) Fuel (gal) = (6.1 lbs/2.8 kgs) Propane (gal) = (4.2 lbs/1.9 kgs)

Metric Conversion: Multiply pounds x 0.453 to obtain kilograms. Multiply gallons x 3.785 to obtain liters. Multiply liters x 61 to obtain cubic inches.

CHASSIS

Model: Ford®

Engine: 6.8L Triton V10

Transmission: Ford®, 5-Speed Automatic w/Overdrive

Alternator: 130 Amp

Torque: 457 lb-ft @ 3250 RPM

Horsepower: 362HP

- GVWR (Gross Vehicle Weight Rating) is the maximum permissible weight of this fully loaded motor home. The GVWR is equal to or greater than the sum of the (UVW) unloaded vehicle weight plus the (CCC) cargo carrying capacity*.
- GAWR (Gross Axle Weight Rating) is the maximum permissible loaded weight a specific axle is designed to carry.
- Base Weight is the estimated weight of the motor home without fuel, options, water, cargo or passengers.
- GCWR (Gross Combined Weight Rating) is the value specified by the motor home manufacturer as the maximum allowable loaded weight of this motor home with its towed vehicle. Towing and braking capacities may be different. Refer to Fleetwood and chassis manufacturer's manuals for complete information.
- Length measured from front bumper to rear bumper (excludes accessories).
- Excludes safety equipment and awnings.
- Motor homes feature a body-width over 96" which will restrict your access to certain roads. Before purchasing, you should research any state and/or province road laws which may affect your usage.
- Tank manufacturer's listed water capacity (WC). Actual propane capacity is 80% of water listing as required by the safety code.

† The chassis manufacturer recommends the installation of a supplemental brake control system to activate the brakes on the vehicle or trailer you are towing. Hitch receiver ratings expressed are maximum for the hitch receiver installed and may require the purchase of additional equipment that is dependent on the weight of the towed load. Consult with hitch receiver manufacturer for further information.

N/A = not available at time of printing.

* UVW and CCC are found on the cargo carrying capacity label in each RV.

IMPORTANT — PLEASE READ: Product information, photography and illustrations included in this publication were as accurate as possible at the time of printing. For further product information and changes, please visit our website at www.fleetwoodrv.com or contact your local Fleetwood dealer. Prices, materials, design and specifications are subject to change without notice. All weights, fuel, liquid capacities and dimensions are approximate. Fleetwood has designed its recreational vehicles to provide a variety of uses for its customers. Each vehicle features optimal seating, sleeping, storage and fluid capacities. The user is responsible for selecting the proper combination of loads (i.e. occupants, equipment, fluids, cargo, etc.) to ensure that the vehicle's capacities are not exceeded.