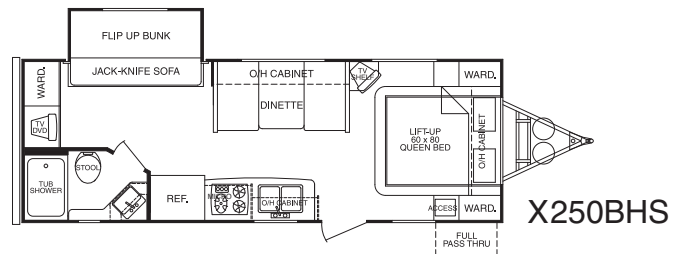
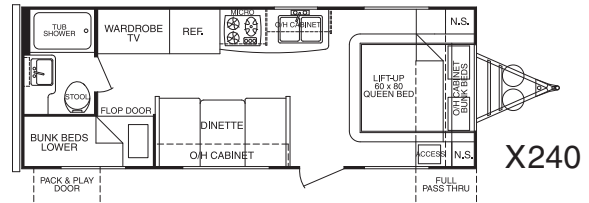
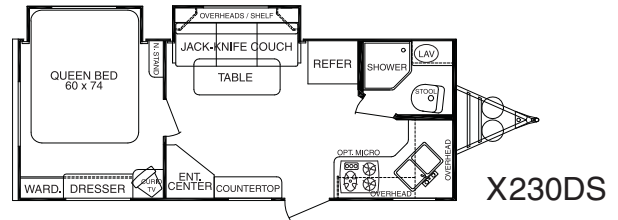
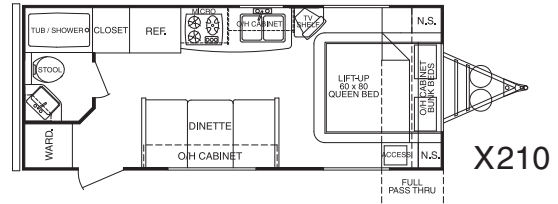
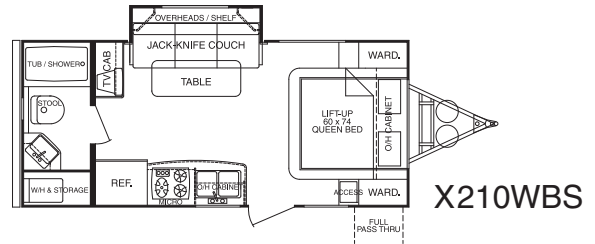
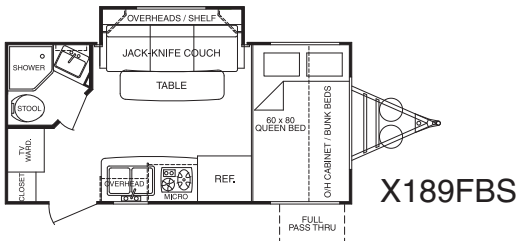
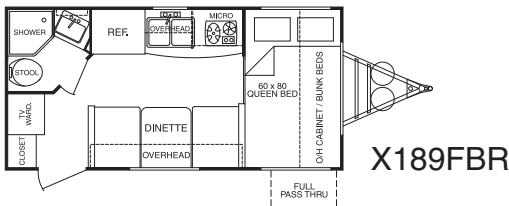
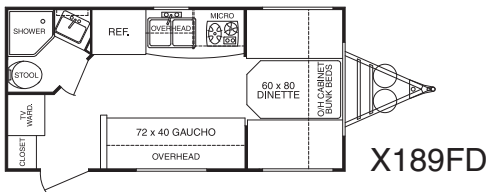
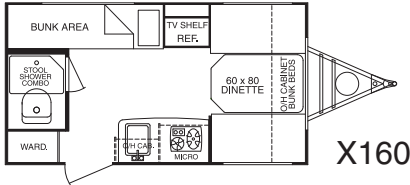
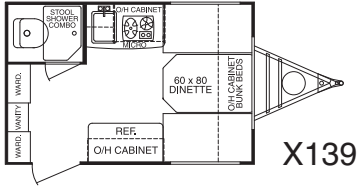


2008

# FUN FINDER X



2008 Fun Finder X	X139	X160	X189FD	X189FBR	X189FBS	X210	X210WBS	X230DS	X240	X250BHS
Exterior Length	14'9"	16'6"	18'3"	18'3"	18'9"	23'6"	21'9"	24'7"	25'1"	26'7"
Exterior Width	84"	84"	84"	84"	84"	90"	90"	90"	90"	90"
Exterior Height	8'2"	8'2"	8'2"	8'2"	8'2"	8'4"	8'4"	8'4"	8'4"	8'4"
Interior Height	6'4"	6'4"	6'4"	6'4"	6'4"	6'4"	6'4"	6'4"	6'4"	6'4"
Bed Size	N/A	N/A	N/A	60x80	60x80	60x80	60x74	60x74	60x80	60x80
Dinette Bed Size	60x80	60x80	60x80	33x72	N/A	40x72	N/A	N/A	40x72	40x72
Gauchos/Couch Size	N/A	N/A	72x40	N/A	35x66	N/A	35x66	35x66	N/A	35x66
Axle Weight (lbs.)	1877	2043	2389	2458	2717	2952	3155	3386	3541	3758
Hitch Weight (lbs.)	230	235	250	250	295	360	315	497	395	455
Dry Weight (lbs.)	2107	2278	2639	2708	3012	3312	3470	3883	3936	4213
GVWR (lbs.)	3330	3335	5850	5850	5895	5960	5915	6097	5995	6055
Cargo Capacity (lbs.)*	1223	1057	3211	3142	2883	2648	2445	2214	2059	1842
Fresh Water Tank (gal)	25	25	25	25	25	36	36	36	36	36
Gray Water Tank (gal)	32	32	32	32	25	38	38	40	38	40
Black Water Tank (gal)	25	25	25	25	25	38	38	25	38	40
LP Bottle (lbs.)	20	20	40	40	40	60	60	60	60	60
Power Converter (Amps)	55	55	55	55	55	55	55	55	55	55
Elect. Ign. Furn. (BTUs)	16K	16K	16K	16K	16K	20K	20K	20K	20K	20K

\* Cargo capacity does not include weight of water or LP gas

STANDARD AND OPTIONAL FEATURES & SPECIFICATIONS

Fun Finder X Travel Trailers		X139	X160	X189FD	X189FBR	X189FBS	X210	X210WBS	X230DS	X240	X250BHS
INTERIOR	5" high density cushions	●	●	●	●	●	●	●	●	●	●
	Fabric box valances	●	●	●	●	●	●	●	●	●	●
	Pleated night shades	●	●	●	●	●	●	●	●	●	●
	Double pocket screwed cabinets	●	●	●	●	●	●	●	●	●	●
	Harmony white or maple cabinet doors and stiles	●	●	●	●	●	●	●	●	●	●
	Large storage cabinets	●	●	●	●	●	●	●	●	●	●
	Brushed nickel hardware	●	●	●	●	●	●	●	●	●	●
	Residential one-piece linoleum flooring	●	●	●	●	●	●	●	●	●	●
	Stainless steel sink with gooseneck faucet	●	●	●	●	●	●	●	●	●	●
	Stainless-look refrigerator front	●	●	●	●	●	●	●	●	●	●
	Sink cover	●	●	●	●	●	●	●	●	●	●
	Handmade medicine cabinet with mirror	N/A	N/A	●	●	●	●	●	N/A	●	●
	Laminate countertops with wood edge	●	●	●	●	●	●	●	●	●	●
	Dinette makes queen bed	●	●	●	N/A	N/A	N/A	N/A	N/A	N/A	N/A
	Brushed nickel towel bar	N/A	N/A	●	●	●	●	●	●	●	●
	Folding legs on dinette table	●	●	●	N/A	N/A	N/A	●	●	N/A	N/A
Overhead bunk with mattress	●	●	○	○	○	○	N/A	N/A	○	N/A	
Overhead front cabinets	○	○	●	●	●	●	●	●	○	●	
Skylight and fan in bathroom	●	●	●	●	●	●	●	●	●	●	
Upgraded innerspring mattress	N/A	N/A	N/A	●	●	●	●	●	●	●	
ELECTRONICS	13" TV	●	●	●	●	●	●	●	●	●	●
	CD/DVD/AM/FM stereo	●	●	●	●	●	●	●	●	●	●
	Hanging cube speakers	●	●	●	●	●	●	●	●	●	●
	Waterproof exterior speakers	●	●	●	●	●	●	●	●	●	●
	TV antenna and booster	●	●	●	●	●	●	●	●	●	●
	Howard Miller digital clock	●	●	●	●	●	●	●	●	●	●
EXTERIOR/CONSTRUCTION	12 volt power disconnect switch	●	●	●	●	●	●	●	●	●	●
	Powder-coated formed I-Beam frame	●	●	●	●	●	●	●	●	●	●
	Under-slung spring axles	●	●	●	●	●	●	●	●	●	●
	Equa-Flex by Trail-Air suspension system	N/A	N/A	●	●	●	●	●	●	●	●
	Alumi-X welded aluminum walls	●	●	●	●	●	●	●	●	●	●
	Electric brakes	●	●	●	●	●	●	●	●	●	●
	B-A-L crank down stabilizer jacks	●	●	●	●	●	●	●	●	●	●
	5/8" tongue and groove plywood floor	●	●	●	●	●	●	●	●	●	●
	Galvanized metal wheel wells	●	●	●	●	●	●	●	●	●	●
	Vacuum bonded gel-coat fiberglass walls	●	●	●	●	●	●	●	●	●	●
	Large pass-through storage compartment	N/A	N/A	N/A	●	●	●	●	N/A	●	●
	One-piece laminated 1 1/2" roof	●	●	●	●	●	●	●	●	●	●
	Poly rotocast holding tanks	●	●	●	●	●	●	●	●	●	●
	Exterior tube-style sewer hose storage	●	●	●	●	●	●	●	●	●	●
	Diamond plate trim	●	●	●	●	●	●	●	●	●	●
	Awning rail and drip rail with downspouts	●	●	●	●	●	●	●	●	●	●
Radius tinted windows	●	●	●	●	●	●	●	●	●	●	
Front window with rock guard	●	●	●	●	●	●	●	N/A	●	●	
Radius entrance and baggage doors	●	●	●	●	●	●	●	●	●	●	
Large bicycle door with fold up bunk and pegboard	N/A	N/A	N/A	N/A	N/A	N/A	N/A	N/A	●	N/A	
Battery tray with plastic storage box	●	●	●	●	●	●	●	●	●	●	
Pre-wired for A/C, stereo, micro	●	●	●	●	●	●	●	●	●	●	
Framed and plumbed for outside spray away	●	●	●	●	●	●	●	●	●	●	
Hot water heater by-pass	●	●	●	●	●	●	●	●	●	●	
Double flair copper gas lines	●	●	●	●	●	●	●	●	●	●	
110v GFI outlet	●	●	●	●	●	●	●	●	●	●	
APPLIANCES/ACCESSORIES	6 Gal. gas water heater	●	●	●	●	●	●	●	●	●	●
	Electric ignition furnace (16K or 20K)	●	●	●	●	●	●	●	●	●	●
	55 amp. converter with charger	●	●	●	●	●	●	●	●	●	●
	Shur-Flo water pump	●	●	●	●	●	●	●	●	●	●
	In-line water filtration system	●	●	●	●	●	●	●	●	●	●
	Dometic Ref. (3 cu. 139/160, 5 cu. all others)	●	●	●	●	●	●	●	●	●	●
	Drop-in range top	●	●	●	●	●	●	●	●	●	●
	Stainless steel power range hood with light	●	●	●	●	●	●	●	●	●	●
	Monitor panel	●	●	●	●	●	●	●	●	●	●
	12 volt roof vent	●	●	●	●	●	●	●	●	●	●
30' detachable power cord	●	●	●	●	●	●	●	●	●	●	
SAFETY	Fire extinguisher	●	●	●	●	●	●	●	●	●	●
	LP detector	●	●	●	●	●	●	●	●	●	●
	Carbon monoxide detector	●	●	●	●	●	●	●	●	●	●
	Smoke alarm	●	●	●	●	●	●	●	●	●	●
	Safety chains	●	●	●	●	●	●	●	●	●	●
	Amber porch light with switch	●	●	●	●	●	●	●	●	●	●
POPULAR OPTIONS	Xtra-Fun Pack (A/C, awning, spare tire, 6 gal. DSI gas/elec. water heater, microwave, outside spray-away, BBQ, front jacks (139/160/189's) or bedspread (210/240/250))	○	○	○	○	○	○	○	○	○	○
	Package 1 (A/C, awning, spare tire)	○	○	○	○	○	○	○	○	○	○
	Package 2 (Fantastic vent, awning, spare tire)	○	○	○	○	○	○	○	○	○	○
	15" LCD flat screen TV on swing bracket	○	○	○	○	○	○	○	○	○	○
	Sirius satellite radio receiver	○	○	○	○	○	○	○	○	○	○
	Air conditioning	○	○	○	○	○	○	○	○	○	○
	Fantastic Vent with thermostat	○	○	○	○	○	○	○	○	○	○
	Awning	○	○	○	○	○	○	○	○	○	○
	Spare tire, cover, and carrier	○	○	○	○	○	○	○	○	○	○
	Dual 20# LP tanks with changeover	○	○	○	○	○	○	○	○	○	○
	6 gal. DSI gas water heater	○	○	○	○	○	○	○	○	○	○
	6 gal. DSI gas/electric water heater	○	○	○	○	○	○	○	○	○	○
	Microwave	○	○	○	○	○	○	○	○	○	○
	Convection microwave	○	○	○	○	○	○	○	○	○	○
	Double door refrigerator	N/A	N/A	○	○	○	○	○	○	○	○
	Oven	N/A	N/A	N/A	N/A	N/A	○	○	N/A	○	○
Outside spray-away	○	○	○	○	○	○	○	○	○	○	
Bedspread	N/A	N/A	N/A	○	○	○	○	○	○	○	
Cabinet bunk	○	○	○	○	○	○	N/A	N/A	○	N/A	
Bike rack	N/A	○	○	○	○	○	○	○	○	○	
Outside BBQ grill	○	○	○	○	○	○	○	○	○	○	
CSA certification	○	○	○	○	○	○	○	○	○	○	
12-24+ limited warranty	●	●	●	●	●	●	●	●	●	●	

● = standard  
○ = option



Your Dealer:

7805 North SR 9 • PO Box 130 • Howe, IN 46746  
Ph 260-562-3500 • Fax 260-562-2210  
Toll Free 866-277-5630 • [www.cruiserrv.com](http://www.cruiserrv.com)  
Cruiser RV, LLC is a DoubleTree RV Company