



CANADA'S BEST! DON'T SETTLE FOR LESS!

2006

The word "Citation" is written in a large, stylized, cursive font with a white outline and a drop shadow. Below it, the word "SUPREME" is written in a smaller, spaced-out, sans-serif font. A silhouette of a mountain range is positioned behind the "Citation" text.

TRUCK CAMPERS

POLAR-PAK 
THE SUB-ZERO SOLUTION

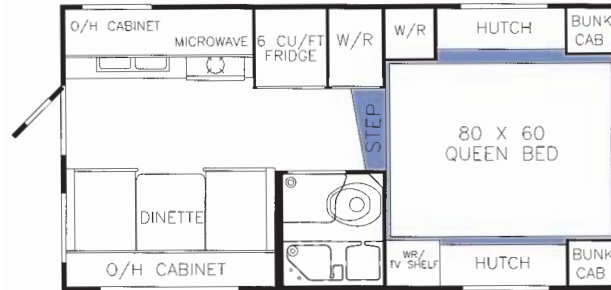
CITATION SUPREME 2006 FLOOR PLANS

Model 9'2" 96" Wide Body

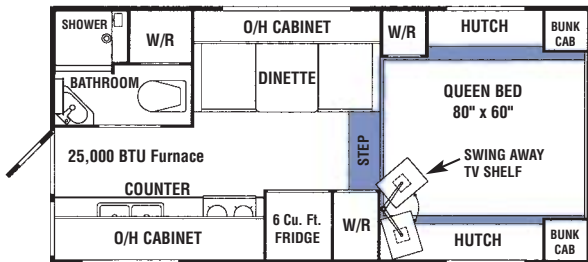


Suitable for Heavy-Duty Short Box Trucks.
*See dealer for Polar Pak features.

Model 9'6" 100" Wide Body



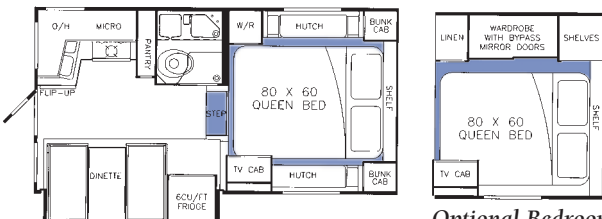
Model 10'8" 100" Wide Body



***POLAR PAK FEATURES**

- * 2" vacuum laminated walls with high density block foam insulation
- * Full aluminum welded frame with thermal break to interior
- * Fully insulated basement with tanks & valves heated direct from furnace
- * 25,000 BTU furnace ducted to all areas of coach including basement storage
- * Residential dual pane skylights with exclusive condensation control
- * Solar reflective "Stormite" double glazed thermopane windows " Best in the Industry"
- * Fantastic Fan with intake or exhaust eliminates condensation
- * Insulated compartment doors and seat bases
- * Aerodynamic molded front fiberglass cap eliminates front window.

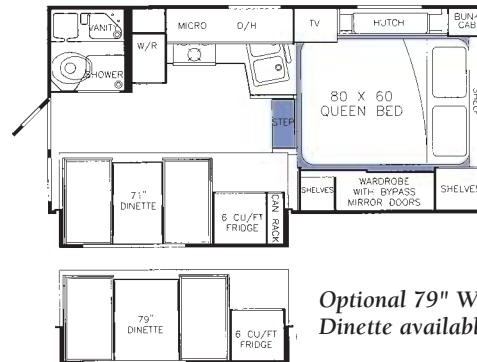
Model 860 Slide Out 100" Wide Body



Suitable for Heavy-Duty Short Box Trucks

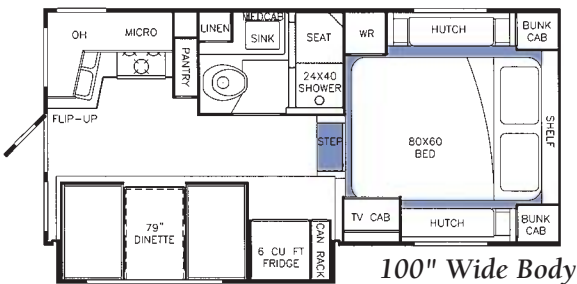
Optional Bedroom available on 860 and 1050

Model 990 Slide Out 100" Wide Body



Optional 79" Wide Dinette available on 990

Suitable for Heavy-Duty Short Box Trucks
Model 1050 Slide Out *New for 2006*



Model 1060 Slide Out *New for 2006*



The manufacturer reserves the right to improve or modify the product which may change specifications, designs or prices. Information contained herein is from data available at time of printing. All products meet or exceed CSA or RVIA standards.

Production information, specifications, photography in this brochure were as accurate as possible at time of printing. Photographs may contain some features that are optional on your vehicle. Since we continually strive to improve our products, actual products may differ. Prices and specifications are subject to change without notice. All capacities are approximate and dimensions are nominal. All products meet or exceed CSA or RVIA standards. Check with your local dealer for a complete list of options and features on the model you are considering.

VEHICLE LOADING: Every effort has been made to provide the greatest number of options for the recreation vehicle owner. Along with these choices comes the responsibility to manage the loads that are imposed by the choices so that they remain within the truck manufacturer's specified chassis weight limits. Do not overload.

DRY WEIGHTS based on standard features; optional equipment not included.

WARNING: This information is intended as a guide only. Weights of individual vehicles may vary. Consult your owner's manual for complete loading instructions.

2006 STANDARD FEATURES AND OPTIONS

EXTERIOR



- Welded aluminum framed walls w/thermal barrier
- Vacuum laminated **Medallion Fiberglass** wall construction
- High density block Styrofoam insulation R7 throughout
- Aerodynamic molded fiberglass front cap
- Solar reflective radius windows (Models 860, 9'6" & up) (N/A 9'2")
- Quality 3M graphics
- Cab window
- Walk-on 2" vacuum laminated welded aluminum framed roof
- Dicor Vinyl roofing material
- Large J rail rain gutters
- Vacuum laminated insulated floor and subfloor
- Heated basement storage
- Radius insulated compartment doors
- Automotive quality clearance & tail lights
- Pre-wire for roof A/C, TV antenna and cable TV hook-up
- Solar panel pre-wire
- Exterior shower
- Black tank flush system
- GFI circuit protection — GFI patio receptacle
- Heavy duty camper tie downs
- Enclosed, molded battery compartment
- Radiused entrance door with Saf-T-View rear window and retainer arm
- Reinforced screen door w/kick panel
- Flush mount lock with deadbolt
- Fold-away assist rail
- Exterior entrance safety light
- Exterior lights on both sides
- Basement Storage Light
- Wide body 100" (n/a 9'2")

- **"Happi Jac" electric jacks** (opt. 9'2")
- Mechanical jacks 9'2"
- Front safety bumpers
- Basement Storage Tray
- Roof rack and ladder
- Decorative white metal undersides

INTERIOR

- All plywood construction — no particle board
- Rugged "Diamond" floor linoleum
- Birch drawers with metal guides
- Solid maple cabinet doors mortise and tenon construction
- Maple-edged countertops and tables
- Stainless steel kitchen sink
- "Moen" Residential faucet, lifetime warranty
- Cutting board/sink cover
- Pull-out can rack — most models
- Upholstered window valances
- Fabric night shades
- Stereo CD Player with 2 speakers
- Microwave pre-wire
- Deluxe Atwood Stainless Steel Range
- Norcold 6 cu.ft. frig (9'2" - 5 cu.ft.) w/brushed aluminum door panels
- Deluxe Systems Monitor panel
- Fluorescent lights in kitchen and L.R.
- Escape window in bedroom
- Fantastic Fan — bedroom (opt. 9'2")
- Innerspring mattress — queen
- Quality bedspread with pillow shams
- Side bedroom storage hutches
- Front bedroom storage cabinets
- Seamless fiberglass shower enclosure
- TV shelf swing-away (Std. 10'8")
- 32 amp power converter
- Propane leak detector
- Carbon Monoxide detector

- D.S.I. water heater 23L/6 Gal.
- Freeze resistant 1/2" waterlines
- 25,000 BTU furnace - DSI -Ducted
- 18,000 BTU furnace (9'2") - DSI -Ducted

POPULAR OPTIONS

- ❖ Air conditioner w/heat strip, 11,000 BTU
- ❖ Aluminum bumper with fold down step
- ❖ Aluminum bumper with triple step
- ❖ Antifreeze pick up system
- ❖ Aluminum lift base for super duty truck
- ❖ Awning at entrance door
- ❖ Awning over slide
- ❖ Awning side box 9'
- ❖ Battery disconnect
- ❖ Battery tray (N/A 9'2")
- ❖ Beds — twin
- ❖ Camper step
- ❖ Carpet floor - loose
- ❖ Clock
- ❖ Electric Jacks - 9'2"
- ❖ Generator pre-wire & pre-plumb (n/a 9'2", 9'6")
- ❖ LCD TV 17" w/swivel arm
- ❖ Microwave oven
- ❖ Maple fridge panels
- ❖ Residential skylite with blind in kitchen
- ❖ Residential skylite in bath (n/a 9'2", 990)
- ❖ Short Box Saddle bags (860, 9'2")
- ❖ Satellite Pre-wire
- ❖ Solar panel 80W
- ❖ Stereo with DVD player
- ❖ "Stormite" double glazed windows (n/a 9'2")
- ❖ "Hehr" double glazed windows (Model 9'2")
- ❖ TV antenna with power boost
- ❖ TV shelf — swing away (9'2")
- ❖ TV shelf - swivel (860, 1050)
- ❖ Water filter
- ❖ Wardrobe (mirrored) I.L.O. hutches (Model 860, 1050)

2006 FEATURES AND SPECIFICATIONS

Model	9'2"	9'6"	10'8"	Slide-Out Models			
				860	990	1050	1060
Floor Length (M./Ft.)	2.7/9'0"	2.8/9'3"	3.2/10'5"	2.6/8'6"	3.0/9'9"	3.2/10'5"	3.2/10'6"
Overall Length (M./Ft.)	5.1/16'9"	5.4/17'7"	5.8/18'9"	5.1/16'10"	5.5/18'2"	5.7/18'9"	5.8/18'10"
Exterior Width (M./Ft.)	2.4/8'0"	2.5/8'4"	2.5/8'4"	2.5/8'4"	2.5/8'4"	2.5/8'4"	2.5/8'4"
Exterior Height (M./Ft.) <small>(To top of ladder, opt. roof A/C - add 7")</small>	2.6/8'5"	2.6/8'6"	2.6/8'6"	2.6/8'6"	2.6/8'6"	2.6/8'7"	2.7/8'8"
Interior Height (M./Ft.)	1.9/6'4"	2.0/6'6"	2.0/6'6"	2.0/6'6"	2.0/6'6"	2.0/6'6"	2.0/6'6"
Bedroom Height (M./Ft.)	1.1/3'8"	1.2/3'10"	1.2/3'10"	1.2/3'10"	1.2/3'10"	1.2/3'10"	1.2/3'10"
Dry Weight (Kg.)	1186 kg	1276 kg	1323 kg	1357 kg	1396 kg	1513 kg	TBA kg
Dry Weight (Lbs.)	2613 lbs.	2813 lbs.	2916 lbs.	2990 lbs.	3076 lbs.	3334 lbs.	TBA lbs.
Fresh Water (L./Gal.)	103/27	103/27	180/48	180/48	180/48	180/48	180/48
Grey Tank (L./Gal.)	68/18	68/18	68/18	95/25	145/38	145/38	145/38
Black Tank (L./Gal.)	74/19	84/22	84/22	95/25	123/32	123/32	123/32
LPG Capacity (Lbs./Gal.)	40/11.5	40/11.5	40/11.5	60/17.1 <small>(OPTION)</small>	60/17.1 <small>(OPTION)</small>	60/17.1 <small>(STD)</small>	60/17.1 <small>(OPTION)</small>

CUSTOMER TESTIMONIALS

“ Overall we are very satisfied with the camper especially the winterization. We slept in it in Pr. George, BC, this winter with a wind chill factor of -22 degrees and were very warm and comfortable.

Mr. & Mrs. R. Wilson - Campbell River, BC

“ Seems like a very good product. General Coach must have good quality control which is difficult to find in RV's.

T. & M Irwin - Aromas, California

“ Both of our previous RV's were good but our new camper is way ahead in craftsmanship, quality of materials and ease of use. Thank you for a wonderful RV. We plan to come and see the factory as we are not far away.

A&M. Johnson - Burlington, Washington

“ I did research for over 4 years to find the right camper – yours was and is the top of the line. I'm very satisfied with what I got for the money. You should be proud of your products. Thank you.

M. Foster, Bremerton, Washington

“ So far we are very satisfied with our camper. We use it mostly for fall and winter camping.

R & A Frost - Soap Lake, Washington

“ We could just feel the quality the minute we walked in. Love the lower bed, the slideout is great! Too many improvements over the competition. So much storage.

M.&S. Brosier - Post Falls, Idaho

“ We went from a large fifth wheel to a camper so that we could tow our boat. I never would have considered a camper until I saw this one. I had to have a kitchen because I love to cook. This one is great!

J & J Green - Stanwood, Washington

“ We have enjoyed our camper tremendously, lots of interior room, spacious bed & large hallway. This camper is actually easier to prepare family meals in than our motorhome. Love layout, lots of room for dishes, pots & pans, etc. Low entry to the queen bed is a definite plus.

D.&B. Skaggs - Vancouver, Washington

“ Quality of workmanship is excellent, abundant storage, skylites, fan with thermostat, super comfortable mattress and many other amenities. We are very satisfied with our purchase. We looked at the competition - quality, amenities and features couldn't be matched for the price.

J.&A. Swanson - Spanaway, Washington

“ Thanks for building a great camper!

J.R. Shepard - Oldtown, Idaho

“ This was a very big purchase for us but we had no regrets! We were able to go camping this fall and winter. The floorplan was the seller for us. We had a hard time deciding between the slide-out and the additional bunk above the diner. We are happy with the extra room the slide-out gives.

G.& K. Long- Snohomish, Washington

“ Bought this unit because it is winterized and that's what we were looking for. Overall - we are very happy with this camper and very happy with our factory tour and the dealership treated us great.

B.&W. Askin - High River, Alberta

“ We've been very happy with our camper and would recommend it highly. Don't give up quality for increased profitability. You have an excellent product and well worth the money.

D & J Wilhelm - Spokane, Washington

“ We appreciated being able to call for any questions or concerns with the camper. Great turn around time for service and answers. Thanks for asking us about our opinions... You have a super product!

C & J George - Lakeside, Oregon

“ We are very impressed with the quality of our camper - it is much higher quality of materials and workmanship. We looked very seriously at the competition and we are very happy we decided to go with General Coach.

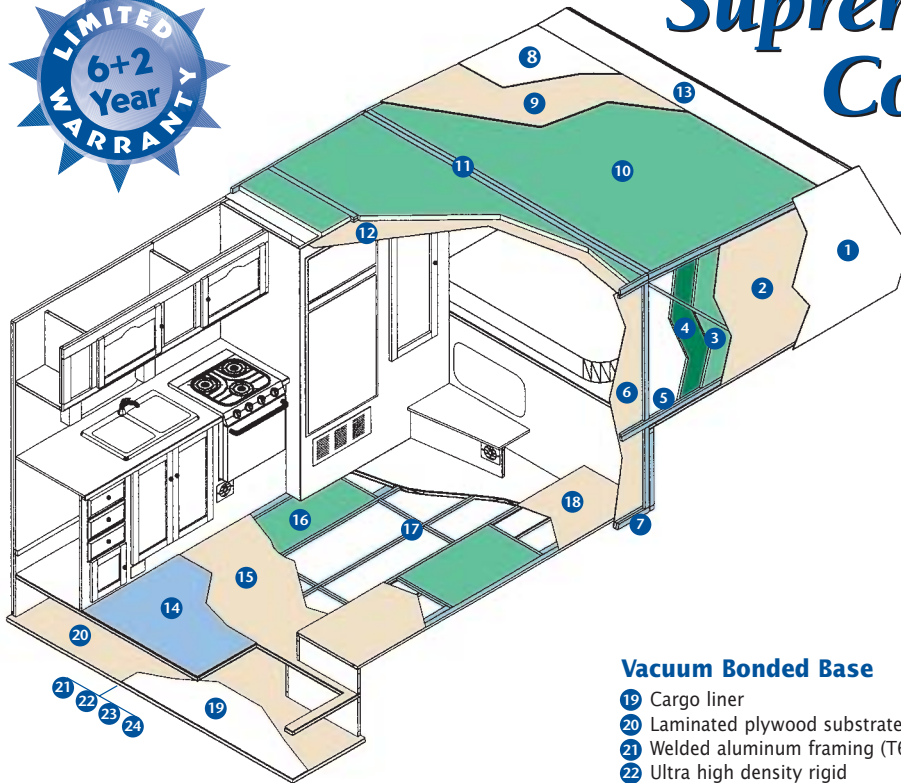
Mr. & Mrs. C. Lewis - 100 Mile House, BC

6 Year Limited Structural & 2 Year Component Warranty

General Coach provides you with a two-year limited warranty on your truck camper and General Coach also includes a six-year limited warranty which covers the structural integrity of your truck camper. Additionally our major component/appliance manufacturers provide a limited two-year warranty on their products. This added warranty is unique to the recreational vehicle industry and should be one of your very serious considerations when choosing your next R.V.



Supreme Construction



2" Vacuum Bonded Wall

- 1 Laminated "Medallion" Filon fiberglass gelcoat exterior
- 2 Laminated plywood substrate
- 3 Ultra high density rigid polystyrene insulation
- 4 Ultra high density rigid polystyrene insulation thermal break (n/a 9'2")
- 5 Welded aluminum framing (T6061)
- 6 Laminated interior panel - plywood
- 7 Aluminum studs doubled at camper-truck anchors

Vacuum Bonded Roof

- 8 Dicor vinyl roofing material
- 9 Laminated plywood substrate
- 10 Ultra high density rigid polystyrene insulation
- 11 Welded aluminum framing (T6061)
- 12 Laminated interior ceiling panel - plywood
- 13 One piece fiberglass front cap

Vacuum Bonded Floor

- 14 Linoleum floor covering
- 15 Laminated 3/8" plywood
- 16 Ultra high density rigid polystyrene insulation
- 17 Welded aluminum framing (T6061)
- 18 Laminated plywood substrate

Vacuum Bonded Base

- 19 Cargo liner
- 20 Laminated plywood substrate
- 21 Welded aluminum framing (T6061)
- 22 Ultra high density rigid polystyrene insulation
- 23 Laminated plywood substrate
- 24 Protective polypropylene underbelly



GENERAL COACH
 P.O. Box 700
 Oliver, BC V0H 1T0
 Telephone: (250) 498-3471
 Fax: (250) 498-3240
 E-mail: gcsales@otvcablelan.net
 Website: www.generalcoach.bc.ca

Our Commitment to Customer Satisfaction

Citation's full two-year limited warranty is reinforced by a limited **six-year structural integrity warranty and a two-year component warranty**. Quality assurance you can depend on! This added warranty is unique to the recreational vehicle industry and should be one of your very serious considerations when choosing your next R.V.

Citation is backed by an international dealer and service network that stretches from coast-to-coast for North American worry free travel. These dealers and dealer service technicians will gladly attest to the excellence of Citation's construction and quality.

Join thousands of General Coach customers in North America and take command of the road with your Citation. **A buying decision you'll never regret.**

We are very proud of our highly skilled people who exercise extreme care in the manufacture of every Citation. We invite you to visit us at General Coach, see the quality process yourself. We know you'll be impressed and we know you'll love the Okanagan Valley.



THOR
 NORTH AMERICA'S BEST RV VALUE

Proudly Presented By



Printed in Canada by
 Wayside Press Ltd.



New for 2006 - The very spacious 100" wide body Model 1050 Slide-Out shown above in the Garden Interior with optional mirrored wardrobe in the bedroom. Check out our unique *Polar Pak features that sets Citation ahead of the competition for comfortable all season travel.

Supreme Livability

Experience the comfort and livability that Citation offers. The new Model 1050 provides spacious bedroom access with superb headroom, a 60" x 80" residential mattress, a bathroom with a separate sit/stand shower and an expansive dinette area. The modern rear kitchen boasts a double stainless steel sink with a residential "Moen" brand faucet and quality name brand appliances. Numerous cabinets with maple doors, can storage rack and quality drawers on steel guides provide superb storage. A residential dual pane skylight with blind and superior lighting brighten the interior. Unique to Citation are the optional solar reflective "Stormtite" double glazed thermopane windows providing cozy comfort in extreme cold or hot weather and are just one aspect of Citation Supreme's * Polar Pak features - the best in the industry!



Model 1050 shown above in the Willow Interior. The bright, open kitchen provides a 180° view of the surroundings.



We are **General Coach**, a division of Thor Industries Inc., a western Canadian company that manufactures the well known Citation brand of quality recreational vehicles. For over 55 years we have been consumer established as builders of high value, superior quality RV's with proven high resale value.

Because we are a limited capacity production company we do not mass produce our products allowing us to ensure strict quality control standards which, in turn, ensures your comfort and satisfaction. Residential quality components and residential style construction techniques are utilized by skilled, conscientious, long term employees dedicated to quality workmanship.

Citation by General Coach is designed for recreational use in western Canadian climate and conditions with standard features second to none. Your peace of mind with your purchase decision is reinforced by Citation's **Six Year Limited Structural Integrity Warranty**.

Why a Thor Product Is Your Best RV Value.

Thor Industries, Inc., proudly traces its history back nearly seventy years to the pioneering days of the RV industry with the founding of Airstream, the industry's oldest and most renowned brand. Our total commitment to quality and our philosophy of putting our customers first has led to our continuous growth; today Thor is the largest manufacturer of travel trailers and fifth wheels, a major manufacturer of motorhomes and the largest builder of small and midsize buses in North America. Thor's strong financial condition and years of solid growth are your assurance that we will be here to serve you for years to come. We think this extra peace of mind is important when you are making a significant investment. **Our customers are always #1 with us.**

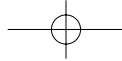
Supreme Satisfaction



The popular 10'8" Model shown above in the modern Autumn Fern Interior provides all the amenities of home in a non-slide model. All models excluding the 9'2" are 8'4" in width which provides spacious livability not found in other campers. You'll marvel at the storage space in this model including superior wardrobes and large pull-out drawers on steel guides. The kitchen is highlighted by a long kitchen counter, large cupboard doors with open storage, a double pull-out can storage rack and modern looking name brand appliances. The bathroom has a separate full height shower enclosure with an optional residential skylight.

Don't take our word for it though! Read our customer testimonial page and discover how our customers enjoy the unique features found only in our campers and how the construction techniques hold up to the rigors of road and climate conditions throughout North America.

A buying decision you'll never regret!



Citation Supreme – Don't Settle For Less!



The popular Model 860 shown above in the Elegance Interior. Optional dual pane skylights brighten the interior and come with a lifetime warranty against leakage and exclusive condensation control.



Molded fiberglass front caps are aerodynamically designed to eliminate wind resistance and provide protection against rock damage. Bedrooms have superior headroom not found in other campers.



Optional "Stormtite" double glazed windows eliminate condensation and allow all season comfort. Solar reflective glass filters UV rays and reduces heat build-up in summer. By far the best made window in the RV industry.



New for 2006 is a redesigned optional bumper with a 2 step foldup and one step add on for easy access to the entrance. A large fold-away assist rail is a standard safety convenience. A ladder provides access to the roof and an optional awning over the entrance door extends 8'. You'll love the long item storage that basements provide with a convenient pull out tray. Holding tanks are enclosed and heated direct from the furnace and both the upper and lower floors are fully insulated with high density block foam insulation. "Happy-Jac" electric jacks are standard on most models.



The Model 860 shown above in the Autumn Fern Interior with optional mirrored wardrobe. Luxurious appointments include bedspread with pillows and shams and standard Fantastic Fan air exchange.

